



European Science and Technology in Action:
Building Links with Industry, Schools and Home



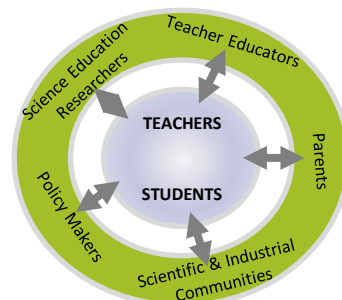
Project Coordinator

Dr. Eilish McLoughlin
Centre for the Advancement of Science
& Mathematics Teaching and Learning,
Dublin City University, Dublin 9, Ireland
E: info@establish-fp7.eu

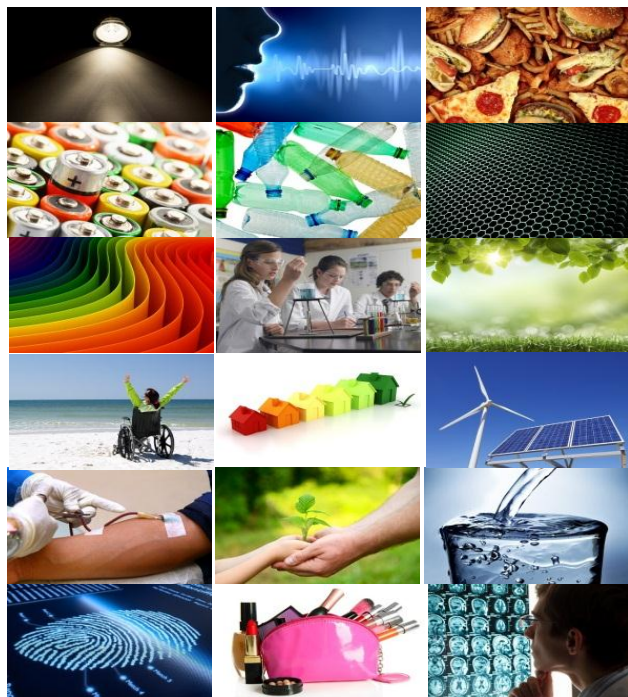
www.establish-fp7.eu

About the project

The ESTABLISH project (2010-2014) was funded under the EU Seventh Framework Programme to encourage and promote the more widespread use of Inquiry Based Science Education (IBSE) in the second level classroom. ESTABLISH project partners have collaborated with local actors (from practitioners to policy makers) to develop both resources and teacher education programmes in IBSE that are suitable for using in science teaching and learning across the participating 11 countries - Ireland, Germany, Sweden, Cyprus, Czech Republic, Poland, Slovakia, Malta, Netherlands, Estonia and Italy.



ESTABLISH collaboration with key stakeholders in science education across Europe



18 ESTABLISH IBSE teaching and Learning Units

Introduction to IBSE	ICT with IBSE
Industrial Content Knowledge	Research and Design Projects
Implementation of IBSE	Argumentation
Development of IBSE	Assessment of IBSE

8 elements of ESTABLISH Teacher Education Programme



The ESTABLISH project has received funding from the European Union's Seventh Framework Programme [FP7/2007-2013] under grant agreement n° 244749. The views and opinions reflect those of authors and the European Union is not liable for any use that may be made of the information contained therein.



Project Impact

- IBSE has become integral in science curricula across Europe.
- Stimulated industry-education collaborations to enhance science curricula, both at national and European level.
- Enhanced expertise of STEM educators across Europe, through shared and evolved practice.
- Increased understanding, attitude and ability of teachers to use IBSE in their classrooms.
- Increased student motivation and communication during lessons and awareness of careers in science and technology.

Project Outputs

18 inquiry-based science education (IBSE) teaching and learning units - exemplary materials for science teachers and educators that share the ESTABLISH approach to IBSE, openly shared to inspire, guide and stimulate the further development of IBSE resources and practices.

ESTABLISH Teacher Education Programme (TEP) - structured professional development programme, appropriate for both pre-service and in-service teachers, that introduces and develops teaching skills relevant to teaching by inquiry.